



# GAT MONTHLY MEMBERSHIP PROGRESS REPORT

Results as of: 2/28/2022

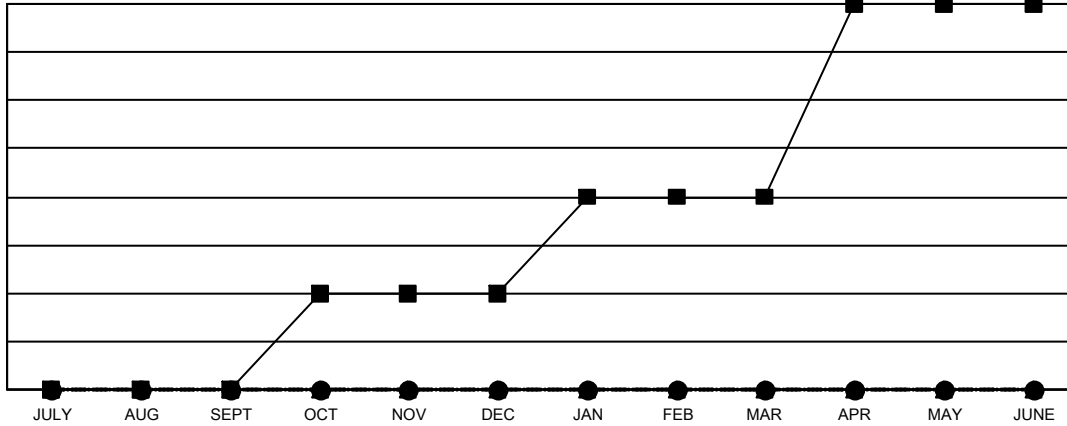
Multiple District 43

LOCATION: KENTUCKY

Clubs			
RESULTS FOR 2021-2022			
QUARTER	NEW CLUB GOAL	NEW CLUBS	DROPPED CLUBS
JULY/AUG/SEPT	0	0	1
OCT/NOV/DEC	1	0	1
JAN/FEB/MAR	1	0	1
APR/MAY/JUNE	2	0	0

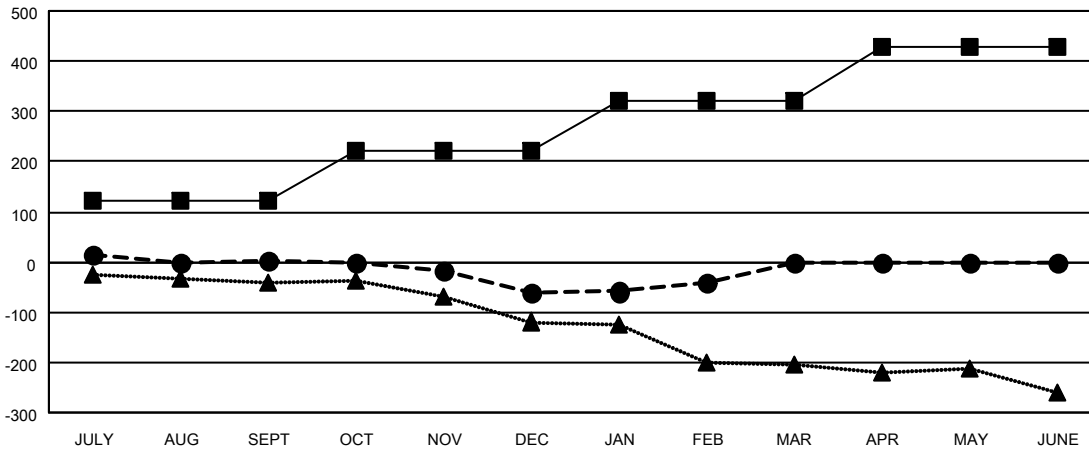
Members			
RESULTS FOR 2021-2022			
QUARTER	MEMBER GROWTH NET GOAL	MEMBER GROWTH ACTUAL	DROPPED MEMBERS ACTUAL (including transfers)
JULY/AUG/SEPT	122	115	104
OCT/NOV/DEC	100	77	131
JAN/FEB/MAR	100	77	52
APR/MAY/JUNE	105	0	0

GOALS AND ACTUAL NEW CLUBS CUMULATIVE



- CURRENT YEAR GOALS FOR NEW CLUBS
- CURRENT YEAR ACTUAL NEW CLUBS
- ▲- LAST YEAR ACTUAL NEW CLUBS

GOALS AND ACTUAL MEMBERS CUMULATIVE



- MEMBER GROWTH NET GOAL
- MEMBER GROWTH ACTUAL
- ▲- LAST YEAR MEMBERSHIP ACTUAL

<b>DROPPED CLUBS: 3</b>	
<b>DROPPED MEMBERS</b>	
DECEASED	54
CLUB CANCELLED	34
OTHER	199
<b>TOTAL</b>	<b>287</b>

66 CLUBS OF 153 ADDED 1 OR MORE NEW MEMBERS

[CLICK HERE FOR CUMULATIVE MEMBERSHIP DATA](#)

GENDER DISTRIBUTION	
MALE	2,381 (65.43%)
FEMALE	1,257 (34.54%)
NON BINARY	0 (0.00%)
PREFER NOT TO ANSWER	1 (0.03%)
<b>TOTAL FAMILY UNIT MEMBERS</b>	<b>703</b>
<b>FAMILY MEMBERS PAYING HALF DUES</b>	<b>361</b>